

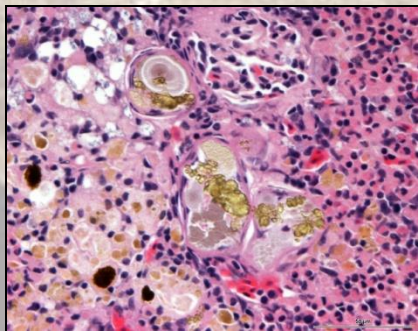
# Short course on toxicologic pathology in fish

University of Berne, Switzerland: 07<sup>th</sup>-09<sup>th</sup> October 2015

**Organisers:** Helmut Segner & Stephen W. Feist

**Lecturers:** Lisa Baumann, Thomas Braunbeck, Stephen W. Feist, Heike Schmidt-Posthaus, Helmut Segner, Jeff Wolf, Thomas Wahli

We are pleased to announce the 3rd short course on toxicologic pathology in fish. The aim is to provide training in the methods and diagnosis of toxicopathological lesions in fish.



The course will cover several aspects of toxicologic pathology in fish including:

- Methodological considerations
- Incidental pathologies
- Commonalities and differences between toxicopathic and infectious lesions
- Design and evaluation of histopathological studies
- Regulatory applications

There will also be a specific element dedicated to the Fish Disease component of BEQUALM (see [www.bequalm.org](http://www.bequalm.org) for more details) whereby liver histopathology, will be discussed. This will broadly follow:



- Overview of liver pathology in flatfish
- Use of liver histopathology in biomonitoring
- Considerations for field studies and the importance of rigorous sampling protocols
- Assessment of liver pathology from other fish species, marine and freshwater

The course will take place at the University of Berne 07<sup>th</sup> to 09<sup>th</sup> October 2015. The course will place significant emphasis on "hands-on" practical training and the diagnosis of pathological changes in fish tissues.

Further details will be made available via the European Association of Fish Pathologists (EAFP) ([www.eafp.org](http://www.eafp.org)) and BEQUALM websites. Places will be limited to 10-12 participants.

**Webpage:**

[www.kas.unibe.ch/tpf](http://www.kas.unibe.ch/tpf)

**Contact:**

Helmut Segner [helmut.segner@vetsuisse.unibe.ch](mailto:helmut.segner@vetsuisse.unibe.ch)

or Stephen Feist [stephen.feist@cefasc.co.uk](mailto:stephen.feist@cefasc.co.uk)

[www.kas.unibe.ch/tpf](http://www.kas.unibe.ch/tpf)



